



Stonedale  
Developments

# Meadow View



Six stone built homes, with a  
**breath taking view**



## The Cattondale

3/4 Bedroom Detached  
Bungalow



## The Meadowvale

4 Bedroom Detached  
Home



## The Stoneleigh

5 Bedroom Detached  
Home



Stonedale  
Developments

[StonedaleDevelopments.co.uk](https://StonedaleDevelopments.co.uk)





# The Meadowvale

Plots 5 & 3

## Basic Specification

**The Meadowvale** is a 4 Bedroom detached home of 1,800 ft<sup>2</sup> (167m<sup>2</sup>) with Beautiful views across the Allen Valley to Allendale and beyond. This Large family home is available to buy off plan.



### Ground Floor

- Open Plan Kitchen, Dining & Family room
- Living Room
- Utility Room
- W.C
- Office
- Porch

### First Floor

- 4 Bedrooms
- Master bedroom en-suite & dressing room
- Family bathroom with walk-in shower

### Garden & Driveway

- Large drive to the front with turning area and lawn
- Stone paved pathways to the rear to a large patio area
- Very large rear garden with uninterrupted views over the valley.

### Garage

- Double garage
- Internal access
- Rear door to the garden







# The Meadowvale

Plots 5 & 3

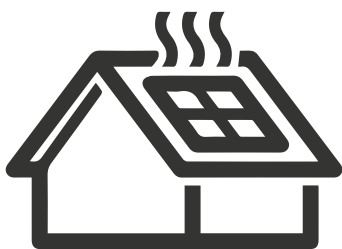
## Interiors

We offer interior options including flooring and kitchen choices. Further options to upgrade internal fittings when buying off plan, are also available.

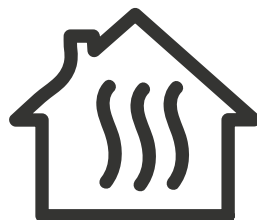


## Green Energy

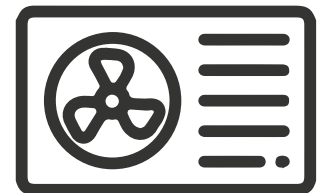
Our homes are designed and built to be highly efficient. Air Source heating, Solar PV and ground floor underfloor heating will ensure your new home is comfortable and cheap to run.



**Solar**



**Underfloor Heating**



**Air Source Heat Pump**

## Future Proof Homes



Stonedale  
Developments

[StonedaleDevelopments.co.uk](http://StonedaleDevelopments.co.uk)



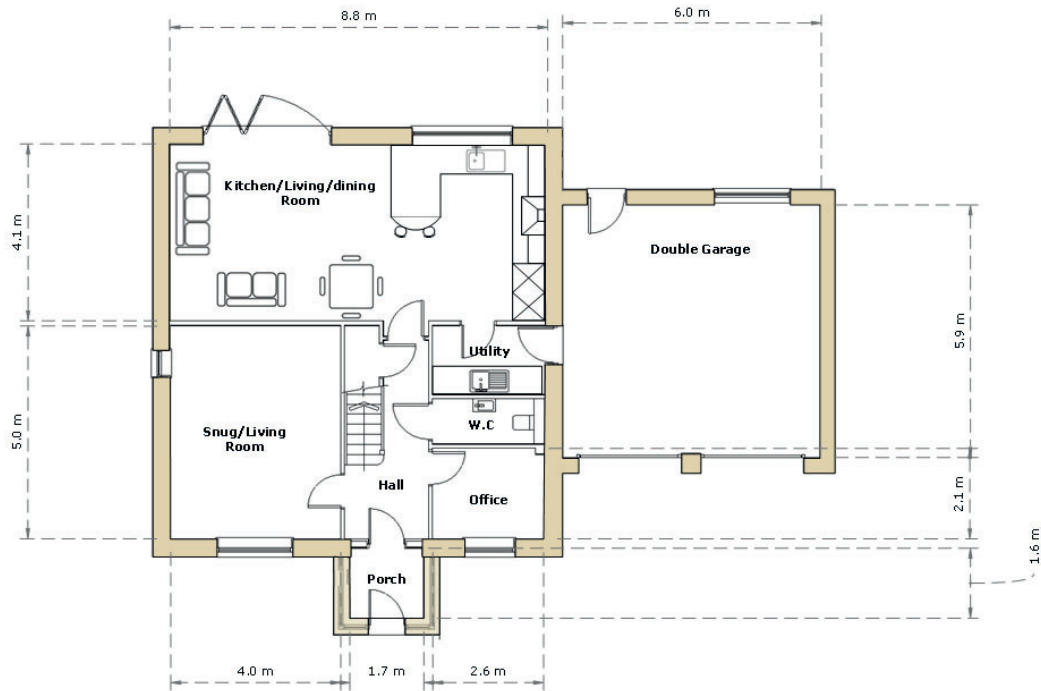


# The Meadowvale

## Plots 5 & 3

### Floor Plans

Ground Floor



First Floor

